

Introducing EV 365 Care:

THE FUTURE
IS ELECTRIC.
**YOUR
PROTECTION
SHOULD BE
TOO.**

The insurance solution designed
specifically for Electric Vehicle
ownership.

Protecting your car, your charger,
and your peace of mind.

Benefits Notes

- The benefits will be provided in addition to the benefits provided under the base motor policy.
- This product is available to Liberty Insurance customers with an active Private Car Comprehensive motor policy for their electric vehicles, as a supplementary add-on.

Exclusions

- Exclusions for Benefit 1:
 - Damage to BEV as a result of the battery running out of charge.
 - Charging costs at the working charging point BEV is taken to.
 - Any consequential costs incurred during the recovery or towing process.
- Exclusions for Benefit 2 and 6:
 - Lack of or improper repair including use of non-genuine of the manufacturer accessories or parts.
 - Use for commercial purposes.
 - Any claims that are payable and/or covered under any other specific policy.
- Other exclusions of your base motor policy.

Note : This list is non-exhaustive. Please refer to the policy wording for the full list of exclusions under this policy.

Important Notice

- This brochure is a brief description of the product only. Kindly refer to the policy wording for the full details of this product.
- Statement pursuant to Financial Services Act 2013, Section 129, Schedule 9, Para 5: It is the duty of the customer to take reasonable care not to make a misrepresentation to the licensed insurer when answering any question which the insurer may request that are relevant to the decision of the insurer whether to accept the risk or not and rates and terms to be applied.
- Liberty General Insurance Berhad is licensed under Financial Services Act 2013 and regulated by Bank Negara Malaysia.



Customer Service Hotline
1 300 88 8990



Email
customer@libertyinsurance.com.my



Website
www.libertyinsurance.com.my



Underwritten by:
Liberty General Insurance Berhad
197801007153 (44191-P)

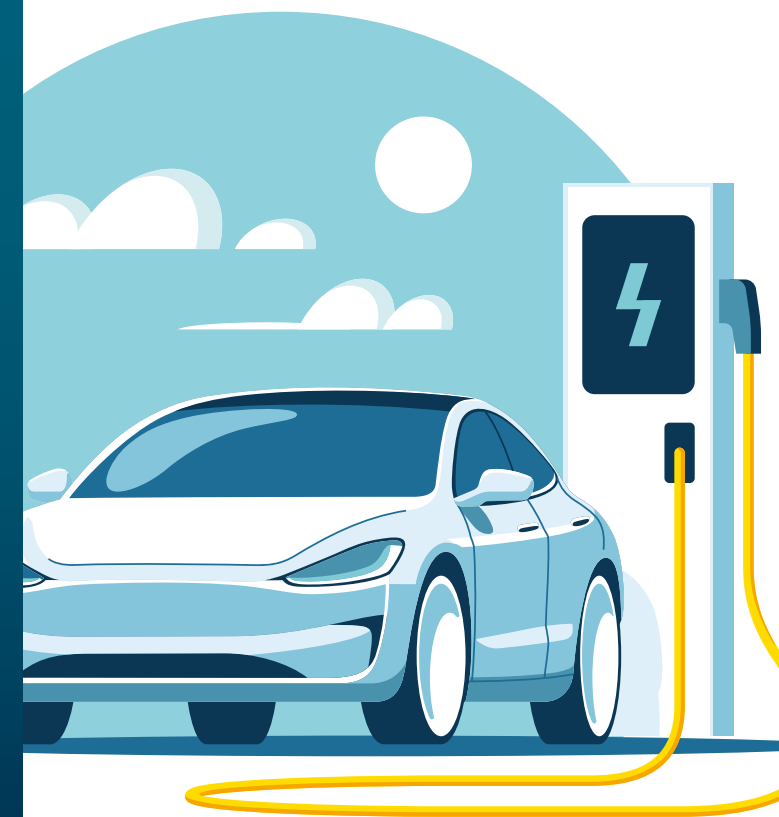
Liberty Insurance Tower, CT9, Pavilion Damansara Heights,
3, Jalan Damanlela, Pusat Bandar Damansara,
50490 Kuala Lumpur, Malaysia.
P.O. Box 11228, GPO Kuala Lumpur,
50740 Kuala Lumpur, Malaysia

This brochure is for general information only. The precise terms, exclusions, conditions and definitions applicable to this insurance are specified in the Policy. For full details, please refer to the Product Disclosure Sheet available on www.libertyinsurance.com.my



EV365 CARE

Future-proof insurance
for the electric era.



Underwritten by:
Liberty General Insurance Berhad 197801007153 (44191-P)

Liberty General Insurance Berhad is a member of PIDM. The benefit(s) payable under this eligible policy is protected by PIDM up to limits. Please refer to PIDM's TIPS Brochure or contact Liberty General Insurance Berhad or PIDM (visit www.pidm.gov.my).

EV365 CARE

Seamless Protection from Wallbox to Wheel.

You didn't just buy a car; you invested in a smarter, cleaner future. But EVs come with unique needs, from specialised battery care to home charging safety.

Traditional insurance wasn't built for high-tech batteries or public charging risk, **EV 365 Care** is. Now you have a protection plan that works as hard as your car does and keeps you moving.

Why EV 365 Care?

Specialised coverage designed specifically for the electric ecosystem, ensuring you stay powered up and protected, 365 days a year.

CUSTOMISED COVERAGE FOR YOU

Protection for loss of/damage to your home wall charger, portable electric charger and more.



UNLIMITED MILEAGE TOWING

Support services designed to keep you moving, even if your battery doesn't.



ASSURANCE ON HOME CONTENT

Rest assured with protection against damage to your belongings in your home caused directly by your home wall charger.



360° Protection for the Modern EV Owner

	Benefits	Sum Insured	
		BEV 365 Care	PHEV 365 Care
1	24 Hours Towing Assistance: Out of Charge	Unlimited - to the nearest working charging point or insured / authorised driver's home	Not applicable
2	Loss or Damage to Home Wall Charger	Up to RM12,000	
3	Personal Liability due to Home Wall Charger	Up to RM50,000	
4	Compassionate Cover for Home Damage due to Home Wall Charger	Up to RM5,000	
5	Compassionate Cover While Using Public Charging Station	Up to RM5,000	
6	Loss or Damage to Portable Electric Charger	Up to RM2,000	

Annual Premium (before Service Tax)

RM150

Note:

- Battery-powered Electric Vehicle (BEV) refers to an electric vehicle that runs solely on electricity stored in a rechargeable battery pack, with no internal combustion engine.
- Plug-in Hybrid Electric Vehicle (PHEV) refers to a hybrid vehicle that combines an internal combustion engine with a rechargeable battery pack.